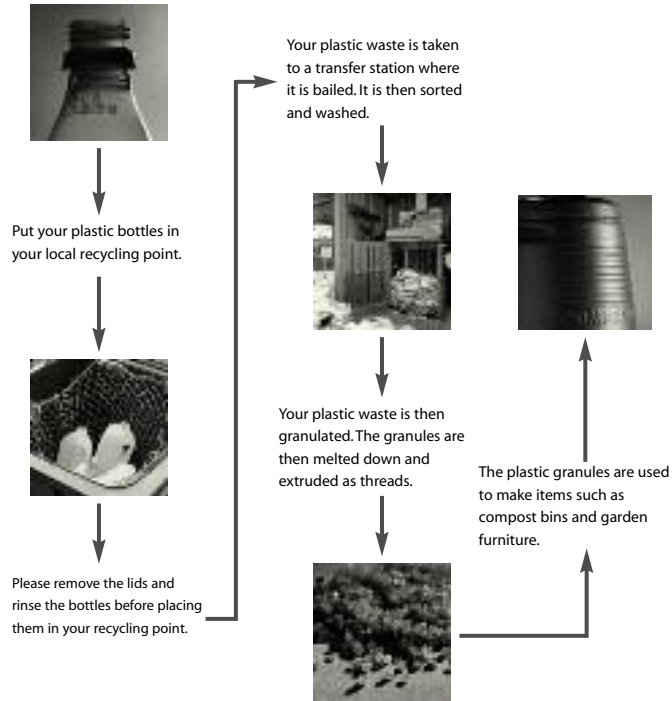
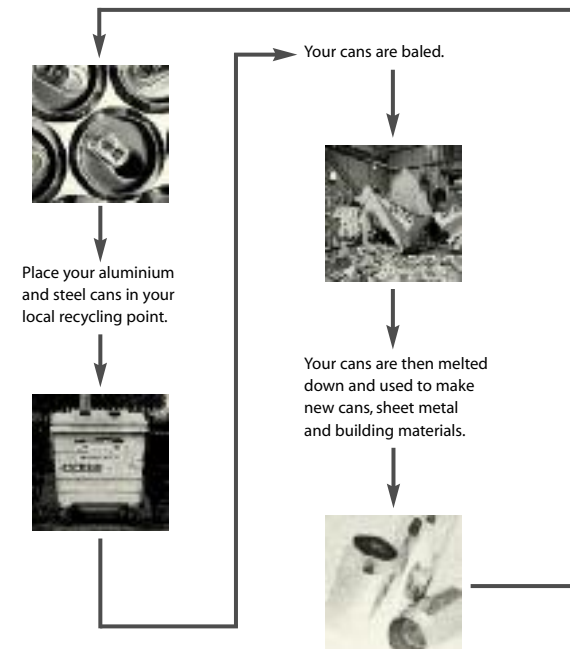


## Plastic



## Cans



### Recycling YOUR waste:

- Saves the Earth's natural resources.
- Saves energy and reduces the risk of climate change.
- Reduces the need for landfill.

This forms part of the National Waste Plan for Scotland.

### Recycling Centre Opening Times

The opening times of Recycling Centres have been altered recently to make them more easily accessible. Our year opening hours are as follows.

#### Aberfeldy, Auchterarder & Bankfoot

Tuesday & Thursday 9.00am - 7.00pm all year round.  
Saturday & Sunday 10.00am - 5.00pm all year round.

#### Blairgowrie, Crieff, Friarton in Perth, Kinross & Pitlochry

Monday - Friday 9.00am - 7.00pm all year round.  
Saturday and Sunday 9.00am - 5.00pm all year round.

If you have any questions regarding Recycling Centres and Points or if you have any suggestions for locations of new Points, please let us know.

Please contact our Customer Service Centre on **01738 476476** or visit [www.pkc.gov.uk/recycling](http://www.pkc.gov.uk/recycling)

To find the location of your nearest Recycling Point or Centre please use the postcode search facility on [www.sort-it.org.uk](http://www.sort-it.org.uk)



**Reduce Reuse Recycle**

towards zero waste

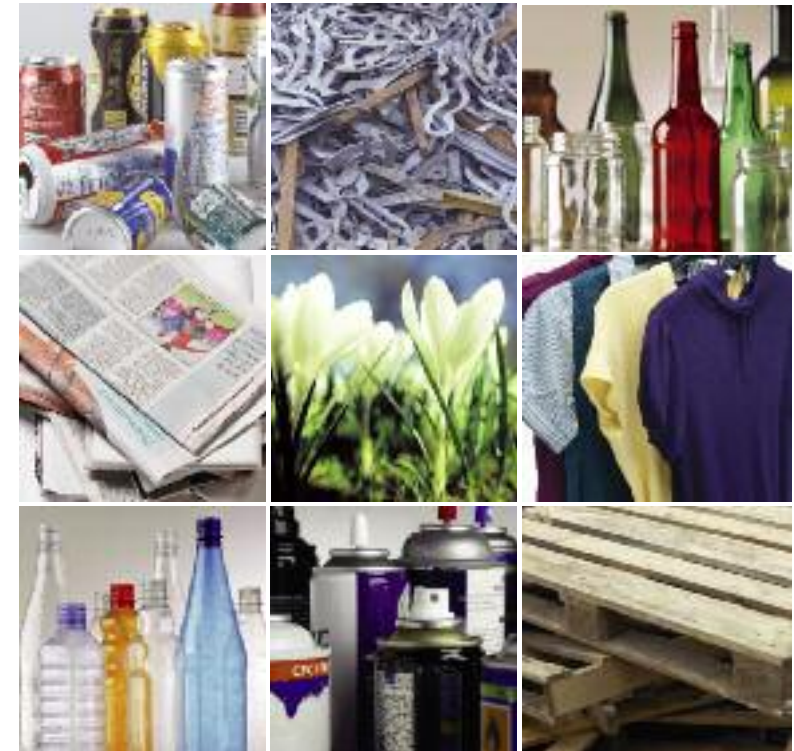
[www.wasteawarescotland.org.uk](http://www.wasteawarescotland.org.uk)

The Waste Aware Scotland programme is funded by the Scottish Government, as part of their commitment to a Greener Scotland. To find out more, or to pledge your support, please visit [www.itsourfuture.co.uk](http://www.itsourfuture.co.uk)

Printed on 80% recycled paper.



# Recycling Centres & Points



**Reduce Reuse Recycle**  
towards zero waste

## Making it easy

Perth & Kinross Council provide Recycling Centres and Points to help you recycle more of your waste and prevent it from going to landfill. With over 60 Recycling Points and 8 manned Recycling Centres throughout Perth & Kinross, access to these recycling facilities is easier than ever.

## Recycling Points

Recycling Points are positioned throughout the region, in areas which best serve local communities. Each year we are introducing new Recycling Points in convenient locations, making it even easier for you to recycle your waste. The Recycling Points offer facilities for collection of any or all of the following:

- **Steel and Aluminium Cans (food, drink and aerosol cans)**
- **Glass (clear, green and brown)**
- **Paper (newspaper, magazines, office quality paper)**
- **Cardboard**
- **Clothes and Textiles**
- **Books**

### WEBwalk

The Council's Waste Education Boardwalk at Friarton Recycling Centre was developed to help schools, community groups and interested individuals learn more about reducing, reusing and recycling their waste. Visits are led by a Waste Awareness Co-ordinator who will illustrate the issues facing waste and recycling, as well as some potential solutions, through a range of interactive displays and illustrative panels. To arrange a visit please contact the Perth & Kinross Council Customer Service Centre on **01738 476476** or email [recycle@pkc.gov.uk](mailto:recycle@pkc.gov.uk)

## Recycling Centres

**Aberfeldy**, Breadalbane Industrial Estate  
**Auchterarder**, Western Road  
**Bankfoot**, Stanley Road  
**Blairgowrie**, Welton Road Industrial Estate  
**Crieff**, North Forr, Broich Road  
**Kinross**, Bridgend Industrial Estate  
**Perth**, Friarton  
**Pitlochry**, Aldour Industrial Estate.

These are manned by Recycling Centre Attendants who are available to give you advice.

The following items can be brought to the Centres for recycling or composting:

- **Steel and Aluminium Cans (food, drink and aerosol cans)**
- **Glass**
- **Plastic Bottles (Natural HDPE & PET)**
- **Paper & Cardboard**
- **Telephone Directories**
- **Textiles**
- **Car Batteries, Engine Oil & Tyres**
- **LPG Gas Bottles**
- **Fridges & Freezers**
- **Garden Waste**

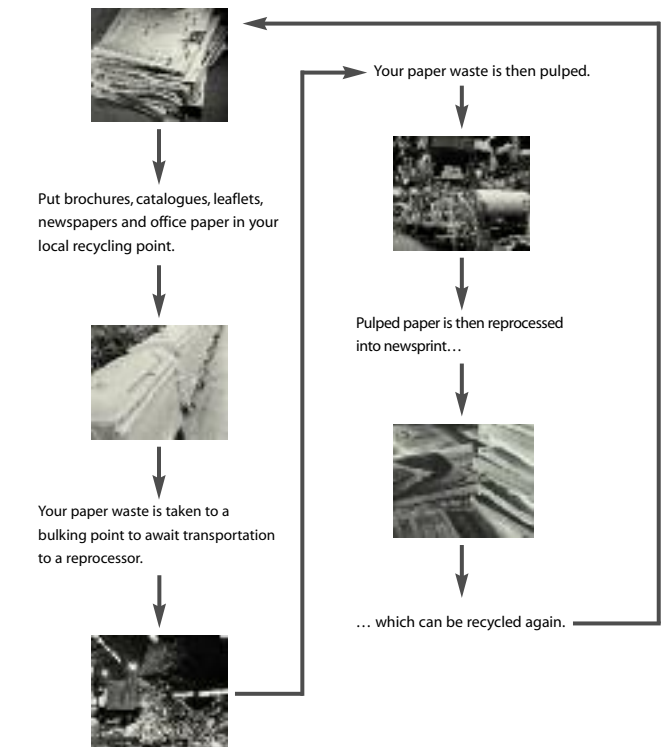
We have recently improved the layouts of our Recycling Centres as well as increasing the number and types of materials you can recycle. All 8 Recycling Centres now also accept:

- **Aluminium Foil**
- **Aerosols**
- **Timber**
- **Inert Waste**
- **Waste Electrical and Electronic Equipment e.g. TVs, CD Players, PCs**
- **Scrap Metal**

## Waste Journeys

What exactly happens to your waste when you bring it for recycling? Here are the 'waste journeys' of four of the most common recyclates.

### Paper



### Glass

